






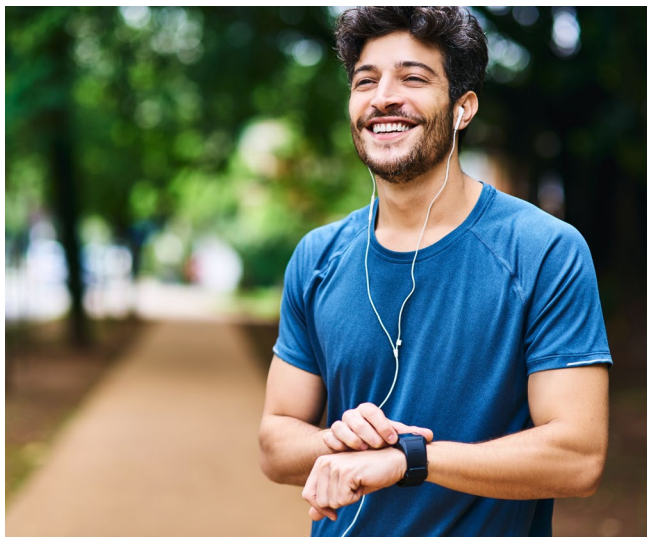
GOOD HEALTH IS WORTH IT

Focus on your well-being and earn rewards up to \$200

The more activities you complete, the greater your reward.

Your whole health matters, and we want to reward you for taking care of it. The Wellbeing Solutions program connects you with easy-to-use digital health and wellness tools that can help you stay your best. When you complete any of the Wellbeing Solutions activities listed below sponsored by your employer, you'll earn rewards to put toward electronic gift cards for select retailers or an account deposit depending on what your employer has chosen for rewards. You choose the activities you'd like to complete to receive the maximum of \$200 in rewards. Don't wait, use your Sydney App or Anthem.com and go to *My Health Dashboard*, select My Rewards to learn more.

Activity type	Activities	Amount
 <p>Preventive care measures</p> <p>How you earn: Receive your reward when claims are processed</p>	Complete an annual preventive wellness exam or well woman exam with your doctor	\$25
	Get an annual cholesterol test ¹	\$20
	Complete a colorectal cancer screening (45 years and older)	\$25
	Complete a routine mammogram (women 40 to 74)	\$25
	Have an annual eye exam ²	\$25
	Get an annual flu shot	\$20
 <p>Condition management programs</p> <p>How you earn: Reach certain benchmarks or complete a program</p>	ConditionCare program: Work one-on-one with your health coach for a chronic condition and earn rewards for participating in and completing the program ³	Up to \$50 (\$20 participation/\$30 completion)
	Future Moms program: Moms-to-be can receive support from a registered nurse and earn rewards for completing initial, interim, and postpartum assessments ⁴	Up to \$40 (\$20 initial/\$10 interim/\$10 postpartum assessments)
	Wellbeing Coach Telephonic – Weight Management Program: Receive one-on-one support and lifestyle coaching for weight management. Complete your goal to earn a reward ⁵	\$25
	Wellbeing Coach Telephonic – Tobacco Cessation Program: Receive one-on-one support and lifestyle coaching for tobacco cessation. Complete your goal to earn a reward ⁶	\$25
 <p>Digital Wellness activities</p> <p>How you earn: Complete activities in the Sydney HealthSM app or on anthem.com</p>	Log in to your Anthem account	\$5
	Connect a fitness or lifestyle device	\$5
	Complete a health assessment and receive tailored health recommendations	\$20
	Complete action plans around eating healthy, weight management, physical activity, and more	Up to \$25 (\$5 per action plan)
	Track your steps	Up to \$60 (\$2 per 50,000 steps tracked)
	Complete Well-being Coach Digital daily mission check-ins ⁷	Up to \$20 (\$4 per milestone)
Update your contact information	\$10	



Well-being Coach can help you meet your goals

Well-being Coach offers multiple options to help you meet your health goals. Our digital coaching app offers personalized 24/7 support on the go. Well-being Coach combines smart technology and proven behavioral therapy techniques to help you maintain a healthy weight, quit tobacco, and improve your nutrition, activity, mindfulness and sleep. Well-being Coach is powered by Lark and accessible from the Sydney Health app.

If you prefer a helping hand and would like additional support meeting your health goals for weight management and tobacco cessation, Well-being Coach gives you access to a certified health coach by phone. You and your health coach will identify healthy habits and develop custom action plans to achieve your health goals. No matter how you connect, you can earn rewards with Well-being Coach.

How to redeem your rewards

When you're ready to redeem your rewards, go to [anthem.com](https://www.anthem.com) or open the Sydney Health app. Then go to *My Health Dashboard*, select **Redeem Rewards**, and use your rewards credit toward an electronic gift card.

You choose from popular retailers including MasterCard, Amazon, Bed Bath & Beyond, Gap (all brands), Staples, Target, The Home Depot, and TJ Maxx. The minimum gift card amount is set by each individual retailer.

Log on to [anthem.com](https://www.anthem.com) or open the Sydney Health app anytime to explore the electronic gift card options available to you.

If you'd like more information about any of the Wellbeing Solutions activities, call the Member Services number on the back of your ID card

1 Annual cholesterol test eligibility: men 35 years and older, women 40 years and older with a full cholesterol (Lipid) panel

2 Routine Annual eye exam reward is available if employer provides vision coverage through Anthem.

3 Adult members identified as moderate or high risk are eligible for ConditionCare and may receive a reward for participation in 1 of 5 ConditionCare programs and completion for 1 of 5 ConditionCare programs: (Chronic Obstructive Pulmonary Disease (COPD), Coronary Artery Disease (CAD), Asthma, Diabetes, and Congestive Heart Failure (CHF).

4 Future Moms assessments completion dates: Initial assessment must be completed by day 97; Interim assessment must be completed by 1 day prior to delivery; Postpartum Assessment must be completed by 56 days after delivery.

5 Well-being Coach Weight Management program (telephonic) is available for members who are identified as high risk based on a BMI of 30 or higher.

6 Well-being Coach Tobacco Cessation program (telephonic) is available for members who are identified as high risk based on any tobacco usage.

7 Members may earn rewards for completing quarterly Well-being Coach Digital milestones while logging daily mission check-in activities on the digital coaching app. The digital coaching app download is available using Sydney Health or [anthem.com](https://www.anthem.com). Well-being Coach Digital is provided by Lark Health.

All preventive care activities are claims-based. Medical waivers apply to all claim-based activities.

Rewards eligibility applies to only employees and their spouse/domestic partner. Members must be active on the plan and activity must take place during the plan effective year. It may take a little time once you complete a wellness activity before you see the reward amount in your account.

Subscriber and spouse/domestic partner may earn rewards when eligible activities are completed and, in some instances, are verified by an Anthem claim. Anthem claims are required for claims-based activity rewards and may take up to 60 days to adjudicate.

Product availability may vary. The reward amount redeemed may be considered income to you and/or your spouse/domestic partner and subject to state and federal taxes in the tax year it is paid. You and/or your spouse/domestic partner should consult a tax expert with any question regarding tax obligations.

The list of retailers available for electronic gift card rewards redemption is subject to change. Open the Sydney Health app or log on to [anthem.com](https://www.anthem.com) or to explore the electronic gift card options available to you.

Sydney HealthSM is offered through an arrangement with CareMarket, Inc. ©2020-2021.

Anthem Blue Cross and Blue Shield is the trade name of: In Colorado: Rocky Mountain Hospital and Medical Service, Inc. HMO products underwritten by HMO Colorado, Inc. In Connecticut: Anthem Health Plans, Inc. In Georgia: Blue Cross Blue Shield Healthcare Plan of Georgia, Inc. In Indiana: Anthem Insurance Companies, Inc. In Kentucky: Anthem Health Plans of Kentucky, Inc. In Maine: Anthem Health Plans of Maine, Inc. In Missouri (excluding 30 counties in the Kansas City area): RightCHOICE® Managed Care, Inc. (RIT), Healthy Alliance® Life Insurance Company (HALIC), and HMO Missouri, Inc. RIT and certain affiliates administer non-HMO benefits underwritten by HALIC and HMO benefits underwritten by HMO Missouri, Inc. RIT and certain affiliates only provide administrative services for self-funded plans and do not underwrite benefits. In Nevada: Rocky Mountain Hospital and Medical Service, Inc. HMO products underwritten by HMO Colorado, Inc., dba HMO Nevada. In New Hampshire: Anthem Health Plans of New Hampshire, Inc. HMO plans are administered by Anthem Health Plans of New Hampshire, Inc. and underwritten by Matthew Thornton Health Plan, Inc. In Ohio: Community Insurance Company. In Virginia: Anthem Health Plans of Virginia, Inc. trades as Anthem Blue Cross and Blue Shield in Virginia, and its service area is all of Virginia except for the City of Fairfax, the Town of Vienna, and the area east of State Route 123. In Wisconsin: Blue Cross Blue Shield of Wisconsin (BCBSWI), underwrites or administers PPO and indemnity policies and underwrites the out of network benefits in POS policies offered by CompCare Health Services Insurance Corporation (CompCare) or Wisconsin Collaborative Insurance Corporation (WCIC). CompCare underwrites or administers HMO or POS policies; WCIC underwrites or administers Well Priority HMO or POS policies. Independent licensees of the Blue Cross Blue Shield Association. Anthem is a registered trademark of Anthem Insurance Companies, Inc.